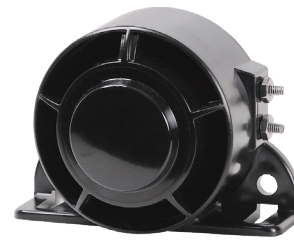


66 SERIES STAR ALARM®

STAR
Safety Technologies by *Grote*



66 Series



66L Series

FEATURES & BENEFITS

- CRS Technology™
- Long-term reliability
- Compact, rear-facing speaker with heavy duty housing
- Available in a variety of decibel options
- Industry-standard mounting holes
- Unique design almost completely protects the speaker from the damage often caused by high-pressure spray, dirt, and fine dust!
- Standard beep: standard single tone, familiar and widely recognized “reverse” tone
- Improved auto-adjust alarm
- Dual Tone “DT”: constant emission of sound by switching between two sounds
- Dual Function “DF”: alarm has two input wires, each activating a distinct tone, allowing the alarm to be connected to two independent functions
- Selectable decibel “S”: select between two loudness levels by applying voltage to a third wire
- Auto-adjust “A”: automatically adjusts its volume based on the ambient noise
- Dimensions: 4^{3/16}”W x 3^{1/8}”H x 2”D
- Amp draw: 0.3 amps

PART	DESCRIPTION
------	-------------

66 SERIES WITH WIRE LEADS

66-087	10-32V DC, 87 dB, SAE J994, single tone
66-097	10-32V DC, 97 dB, SAE J994, single tone
66-097-12	12V DC only, 97 dB, SAE J994, single tone
66-102	10-32V DC, 102 dB, single tone
66-107	10-32V DC, 107 dB, SAE J994, single tone
66-097DT	12-36V DC, 97 dB, dual tone
66-102DT	10-32V DC only, 102 dB, dual tone
66-707A	10-32V DC, 77-97 dB, auto adjust
66-802A	10-32V DC, 82-102 dB, auto adjust, SAE J994 approved
66-807A	10-32V DC, 87-107 dB, auto adjust, SAE J994 approved
66-802S	10-32V DC, 87 or 102 dB, selectable
66-907S	10-32V DC, 97 or 107 dB, selectable

PART	DESCRIPTION
------	-------------

66L SERIES WITH LUGS ONLY

66-097DF	10-32V DC, 97 dB, dual function
66L-087	10-32V DC, 87 dB, SAE J994, single tone
66L-097	10-32V DC, 97 dB, SAE J994, single tone
66L-097-12	12V DC only, 97 dB, SAE J994, single tone
66L-102	10-32V DC, 102 dB, single tone
66L-107	10-32V DC, 107 dB, SAE J994, single tone
66L-097DT	10-32V DC, 97 dB, dual tone
66L-102DT	10-32V DC only, 102 dB, dual tone
66L-707A	10-32V DC, 77-97 dB, auto adjust
66L-802A	10-32V DC, 82-102 dB, auto adjust, SAE J994 approved
66L-807A	10-32V DC, 87-107 dB, auto adjust, SAEJ994 approved

 **Warning:** Cancer and Reproductive Harm - www.P65Warnings.ca.gov

SF109 Rev-H 05-11-2023



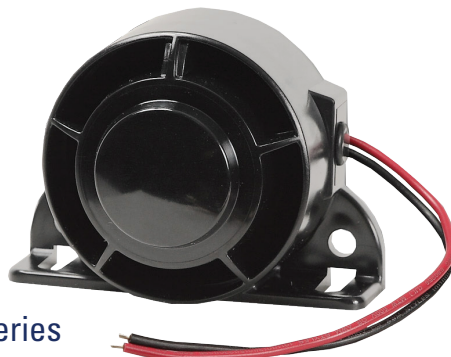
**FOR MORE INFORMATION
VISIT OUR WEBSITE.
STARSAFETYTECHNOLOGIES.COM**

Star Safety Technologies, LLC
455 Rochester St., Avon, NY 14414
Phone: 585-226-9500 | Fax: 888-478-2797

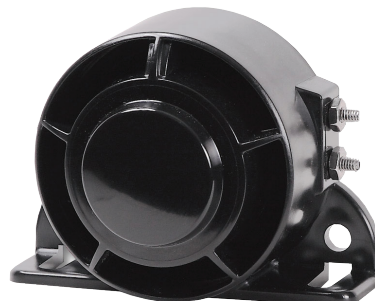
STAR
Safety Technologies by *Grote*

66 SERIES STAR SPECTRUM™ ALARM

STAR
Safety Technologies by *Grote*



66 Series



66L Series

FEATURES & BENEFITS

- Rich audible tones combined with familiar sound of a traditional warning alarm
- Narrow array of frequencies
- Individually programmed through a proprietary fixture that incorporates the optimal frequency into each alarm
- Emits a composite buzz tone
- Spectrum "SS": Composite of multiple tones, referred to as "multi frequency", tighter frequency range, more universally recognizable warning tone
- Dimensions: $4\frac{3}{16}$ "W x $3\frac{1}{8}$ "H x 2"D
- Amp draw: 0.3 amps

PART	DESCRIPTION
------	-------------

66 SERIES WITH WIRE LEADS	
---------------------------	--

66-087SS	10-32V DC, 87 dB, Spectrum™
66-092SS	10-32V DC, 92 dB, Spectrum™
66-097SS	10-32V DC, 97 dB, Spectrum™

PART	DESCRIPTION
------	-------------

66L SERIES WITH LUGS ONLY	
---------------------------	--

66-097SS	10-32V DC, 97 dB, Spectrum™
----------	-----------------------------

 **Warning:** Cancer and Reproductive Harm - www.P65Warnings.ca.gov

SF109 Rev-H 05-11-2023



**FOR MORE INFORMATION
VISIT OUR WEBSITE.
STARSAFETYTECHNOLOGIES.COM**

Star Safety Technologies, LLC
455 Rochester St., Avon, NY 14414
Phone: 585-226-9500 | Fax: 888-478-2797

STAR
Safety Technologies by *Grote*